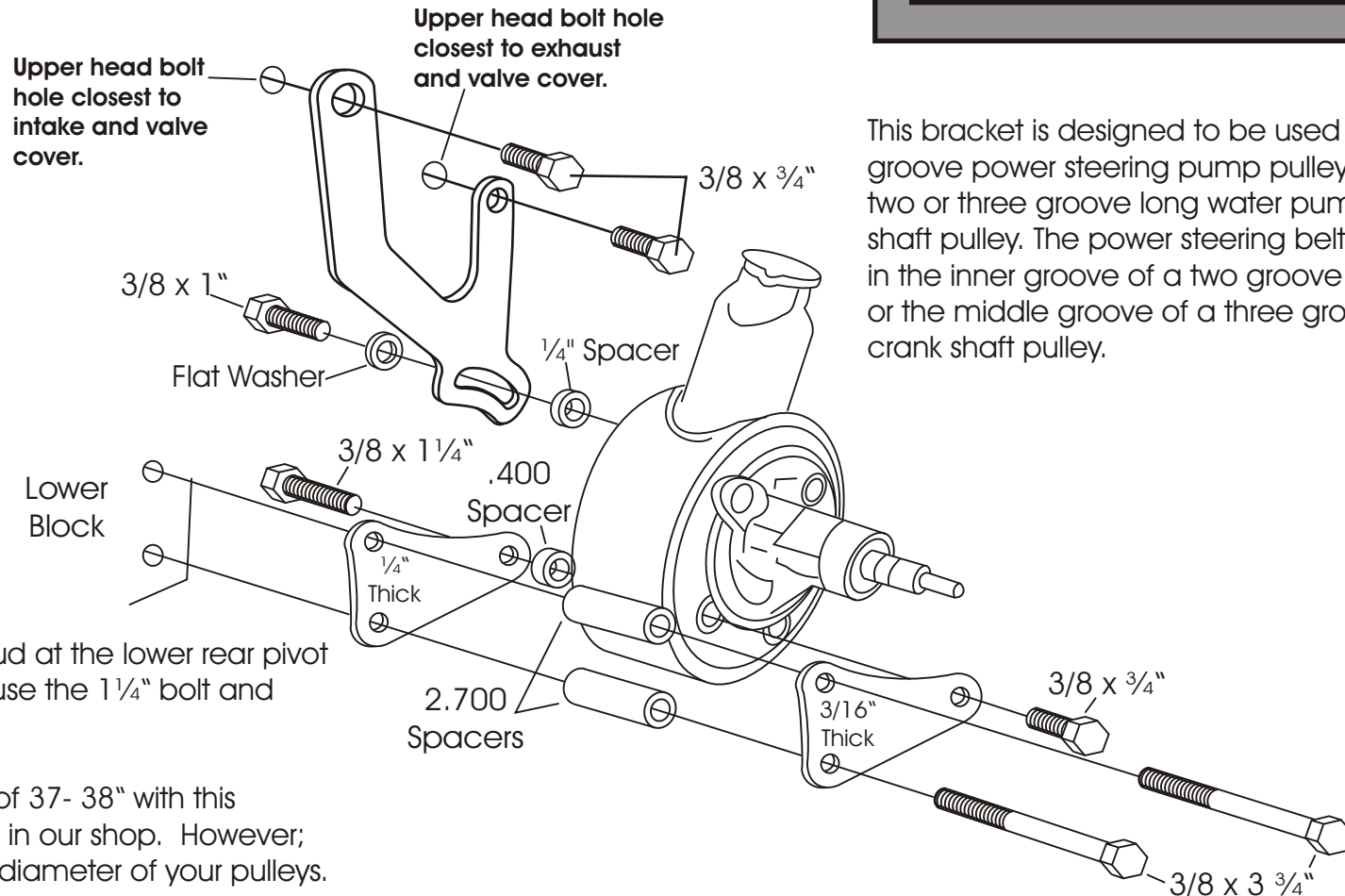




This bracket is designed to be used with the non-metric Chevrolet pump with attached reservoir. There are a large number of pumps available from 1961 to 1981 that will work well with our power steering bracket. For more detailed information see the enclosed power steering pump sheet.

# POWER STEERING PUMP MOUNT 417L

Small Block Chevy - Driver's Side  
Electric Water Pump



This bracket is designed to be used with a 1 groove power steering pump pulley, and a two or three groove long water pump crank shaft pulley. The power steering belt will run in the inner groove of a two groove crank, or the middle groove of a three groove crank shaft pulley.

If your pump has a stud at the lower rear pivot point, remove it and use the 1 1/4" bolt and .400 spacer.

We use a belt length of 37- 38" with this mount on installations in our shop. However; this can vary with the diameter of your pulleys.

**As with any part of this nature, make sure it fits your application before painting or plating. Parts that have been painted, plated, or modified may not be returned.**

POWER STEERING  
PUMP MOUNT  
417L

Small Block Chevy - Driver's Side  
Electric Water Pump

**ALAN GROVE COMPONENTS, INC.**  
**27070 METCALF ROAD**  
**LOUISBURG, KS 66053**