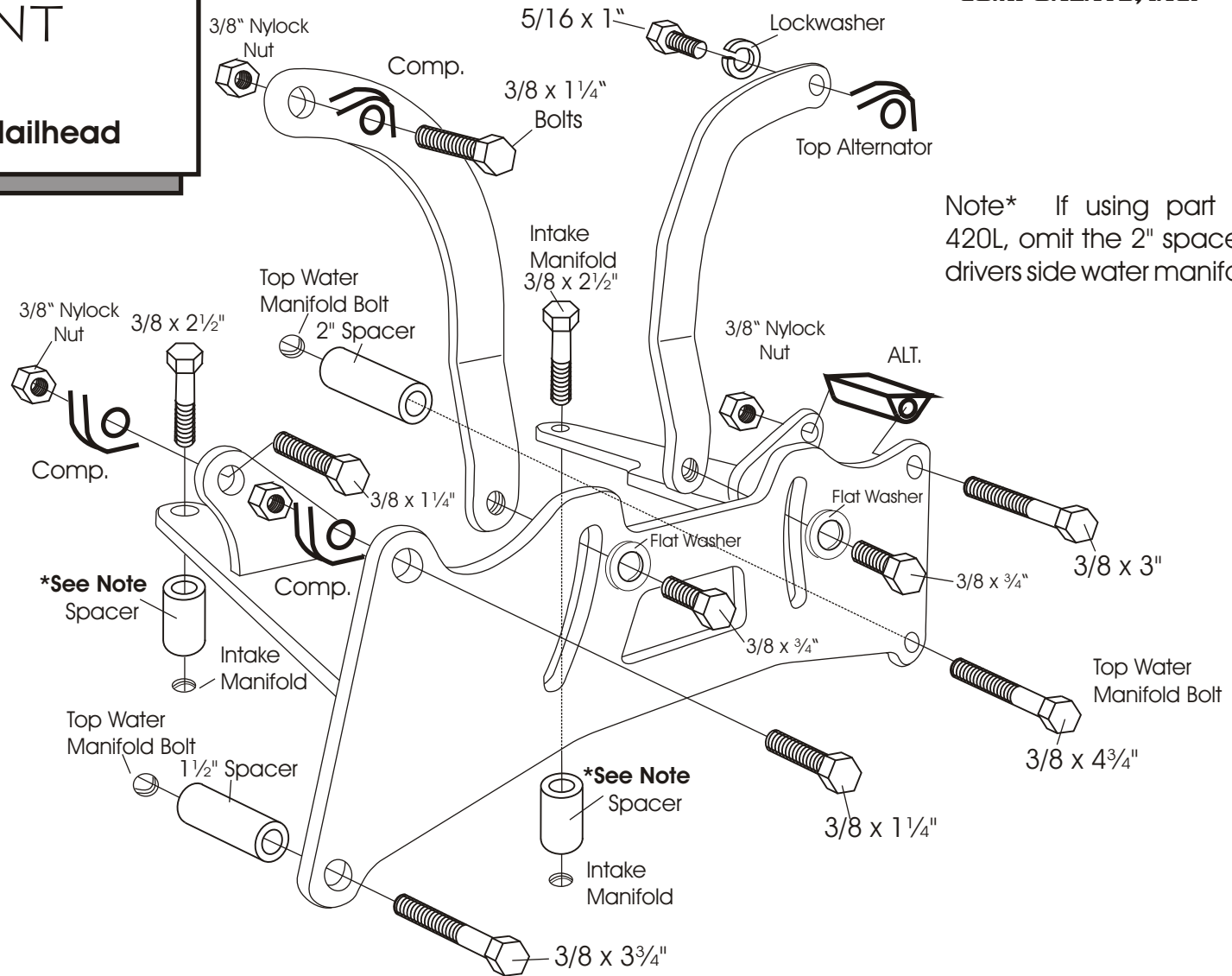


A.C. COMPRESSOR & ALTERNATOR MOUNT

311

401/425 Buick Nailhead

We use a belt length of 51½" - 52½" on the alternator, and 54½" - 55½" for the compressor. **Belt lengths will vary depending on the diameter of your pulleys.**



Note* If using part number 420L, omit the 2" spacer at the drivers side water manifold.

Be Sure to start all bolts before tightening.

***Note:** If using factory cast iron intake, use 1¼" Spacer. **Aftermarket Aluminum Intakes vary in thickness and may require spacer modification.** Tighten bolts at water manifold first. Then determine the length of spacer needed between the bracket and intake manifold. 1" spacers are also supplied with hardware.

As with any part of this nature, make sure it fits your application before painting or plating. Parts that have been painted, plated, or modified may not be returned.

A.C. COMPRESSOR
& ALTERNATOR
MOUNT

311

401/425 Buick Nailhead

ALAN GROVE COMPONENTS, INC.
27070 METCALF ROAD
LOUISBURG, KS 66053