

Alternator Mount

Part# 242

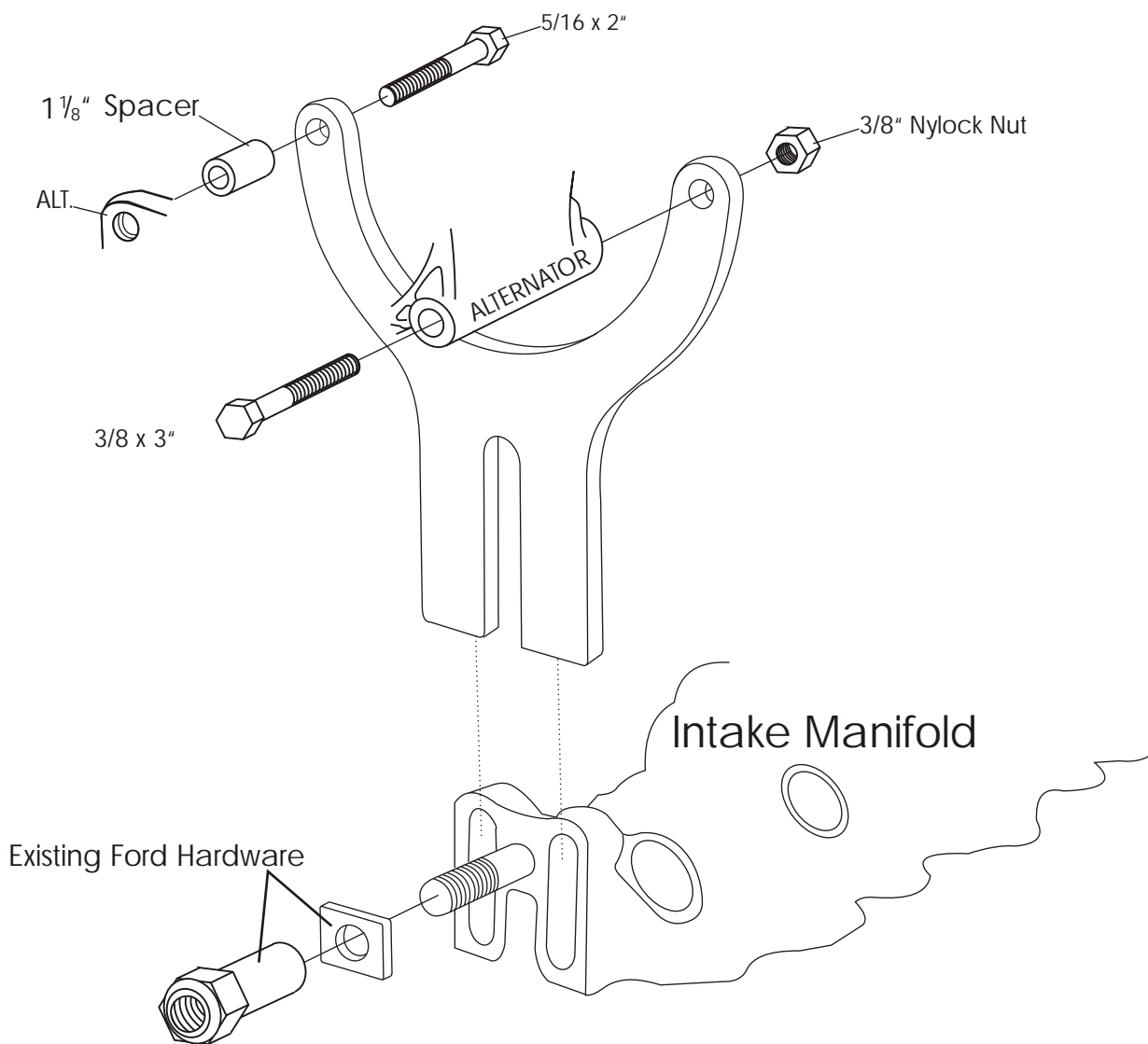
Flathead Ford/Mercury Late Wide Belt

1949 Car and 1948- 53 Truck



NOTE: This application will require the use of a wide GM alternator pulley to accommodate the 5/8" width drive belt. These pulleys are available from Speedway Motors or other street rod vendors.

BELTS: We use a belt length of 57 5/8" in our shop for the alternator and A.C. Compressor belt (NAPA part# 22570), and a fan belt length of 37 7/8" (NAPA part# 22373). These lengths may vary depending on your pulley diameters and application.



Al ternator
Mount
Part # 242

Flathead Ford/Mercury
Late Wide Belt

1949 Car and 1948-53 Truck

ALAN GROVE COMPONENTS, INC.

27070 METCALF ROAD

LOUISBURG, KS 66053