

Alternator Mount

Part# 241

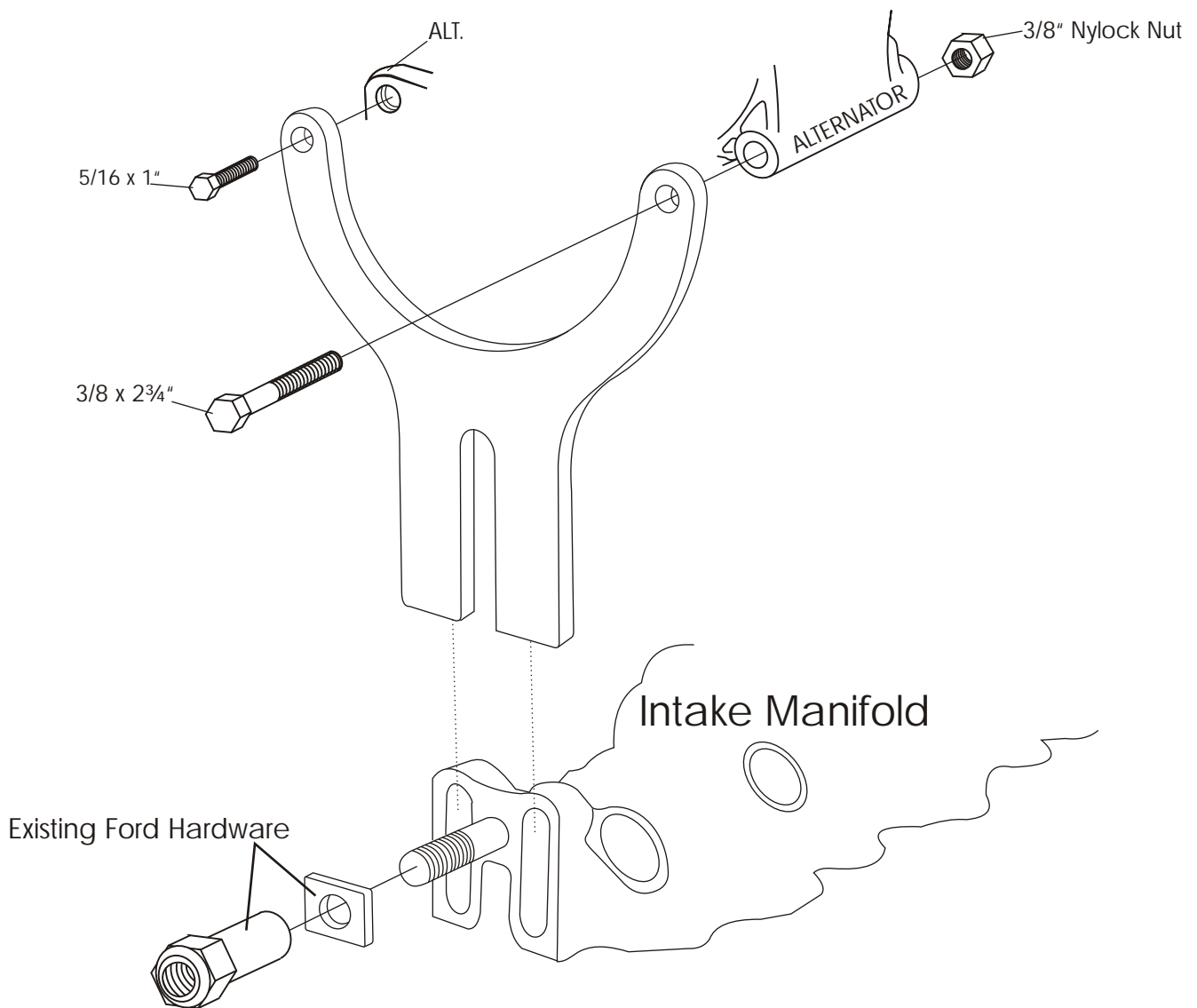
Flathead Ford/Mercury Early Wide Belt

1937-48 Car and 1937- 47 Truck



NOTE: This application will require the use of a wide GM alternator pulley to accommodate the 5/8" width drive belt. These pulleys are available from Speedway Motors or other street rod vendors.

We use a belt length of 55 7/8" (NAPA part# 22553) in our shop; However this length may vary depending on your pulley diameters and application.



Al ternator
Mount
Part # 241

Flathead Ford/Mercury
Early Wide Belt
1937-48 Car and 1937- 47 Truck

ALAN GROVE COMPONENTS, INC.
27070 METCALF ROAD
LOUISBURG, KS 66053