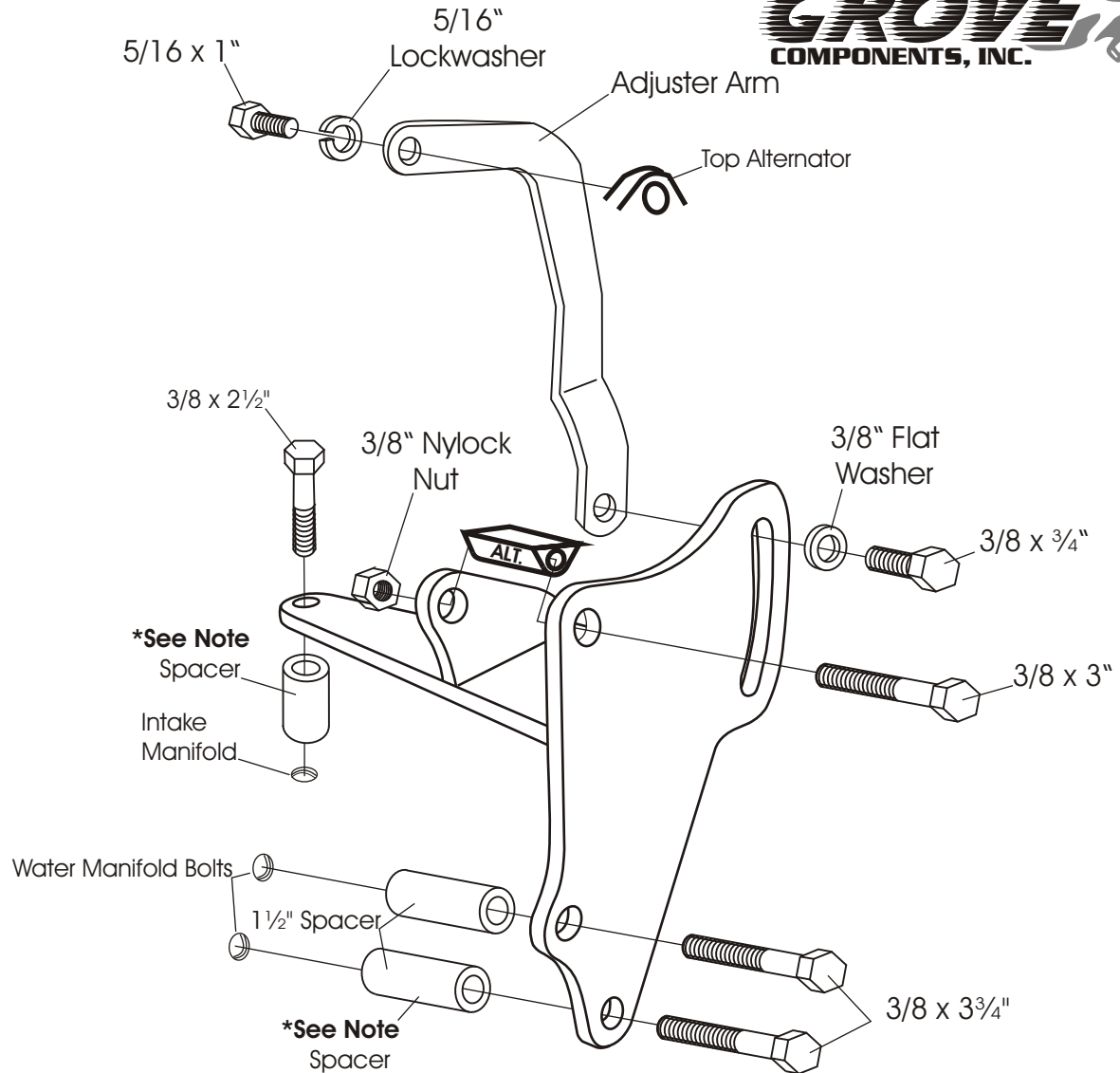


# ALTERNATOR MOUNT 240R

Nailhead Buick - Passenger Side



**Be Sure to start all bolts before tightening.**

We use a belt length of 51 1/2" - 52 1/2" on the alternator. **Belt lengths will vary depending on the diameter of your pulleys.**

Note\* If using part number 420L, omit the 2" spacers at the water manifold and replace with spacers provided in the 420L hardware kit.

\*Note: If using factory cast iron intake, use 1 1/4" Spacer. **Aftermarket Aluminum Intakes vary in thickness and may require spacer modification.** Tighten bolts at water manifold first. Then determine the length of spacer needed between the bracket and intake manifold. 1" spacers are also supplied with hardware.

**As with any part of this nature, make sure it fits your application before painting or plating. Parts that have been painted, plated, or modified may not be returned.**

ALTERNATOR  
MOUNT  
240R

Nailhead Buick - Passenger Side

**ALAN GROVE COMPONENTS, INC.**  
**27070 METCALF ROAD**  
**LOUISBURG, KS 66053**